



AP 3-D Art and Design Portfolio

Genevieve Lee

2022



Image 1

Sustained Investigation

Height: 8.2 inches

Width: 7.87 inches

Depth: 5.11 inches

Material(s): The main components used for this piece were polymer clay, acrylic paint and UV resin for the glaze

Process(es): I took off the teddy bears face and moulded its inner and outer feelings to show its true identity.

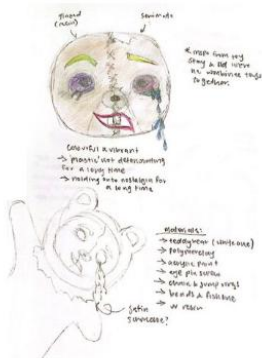


Image 2

Sustained Investigation

Height: NA

Width: NA

Depth: NA

Material(s): The main components used for this piece were polymer clay, acrylic paint and UV resin for the glaze

Process(es): I revised my piece by using more vibrant colours in the actual piece and added beaded elements.

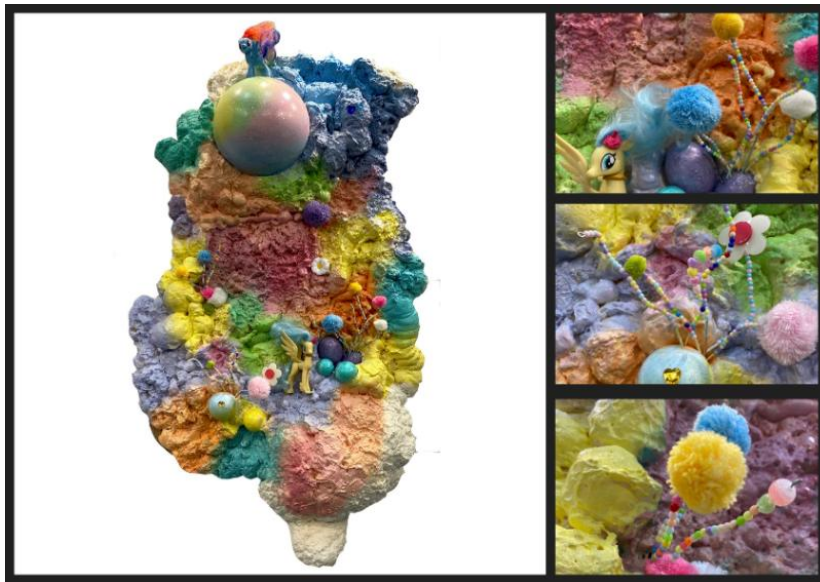


Image 3

Sustained Investigation

Height: 23.2 inches

Width: 17.3 inches

Depth: 7.08 inches

Material(s): Spraying foam onto cardboard and building my imaginary world

Process(es): A nostalgic piece where everyone can relate to with the colours, toys and textures



Image 4

Sustained Investigation

Height: NA

Width: NA

Depth: NA

Material(s): Spraying foam onto cardboard and building my imaginary world

Process(es): I experimented this piece by using expanding foam to create abstract cloud pieces to add to my land.



Image 5

Sustained Investigation

Height: 6.69 inches

Width: 8.66 inches

Depth: 4.7 inches

Material(s): Leftover beads from a broken necklace, stainless steel wires to make the vines and the snake.

Process(es): I shaped the wire around my head and over my face and coiled the ends to make them look like vines.

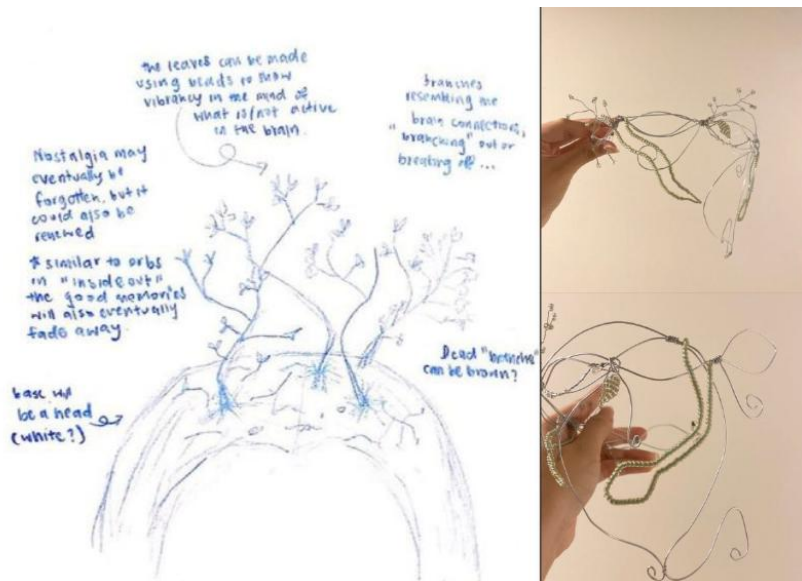


Image 6

Sustained Investigation

Height: NA

Width: NA

Depth: NA

Material(s): Leftover beads from a broken necklace, stainless steel wires to make the vines and the snake.

Process(es): I revised this piece many times, going through different structures and went with a wrap structure.



Image 7

Sustained Investigation

Height: 21.6 inches

Width: 11 inches

Depth: 11.8 inches

Material(s): Horse lantern I bought from someone, stocking, clothes hanger, wood, paint, lights

Process(es): The abstract statue was made with a clothes hanger and painted the stocking before putting it under.



Image 8

Sustained Investigation

Height: 1.57 inches

Width: 0.78 inches

Depth: 0.78 inches

Material(s): UV resin, cast and mould, beads, glitter sequins, ring pop plastic ring that I ate.

Process(es): I casted an abstract shape and used UV resin to attach it to the ringpop.



Image 9

Sustained Investigation

Height: NA

Width: NA

Depth: NA

Material(s): UV resin, cast and mould, beads, glitter sequins, ring pop plastic ring that I ate.

Process(es): Finding inspiration from a ringpop, I revised this by adding the resin part to show inner memories.



Image 10

Sustained Investigation

Height: 0.39 inches

Width: 4.72 inches

Depth: 3.54 inches

Material(s): Air dry clay, uv resin, two part resin and acrylic paint to make the fishes and the pond.

Process(es): I used clay to make the pond and then made the fishes out of uv resin before glazing it in resin.

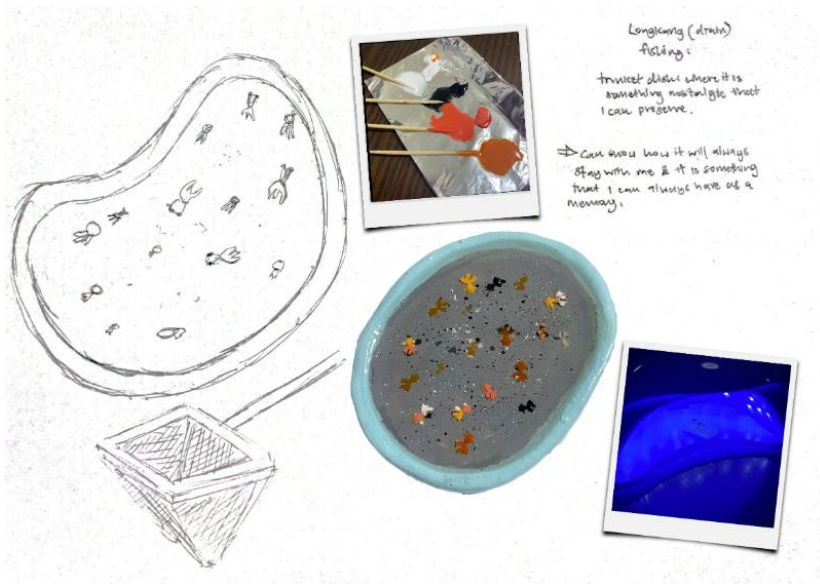


Image 11

Sustained Investigation

Height: NA

Width: NA

Depth: NA

Material(s): Air dry clay, uv resin, two part resin and acrylic paint to make the fishes and the pond.

Process(es): I experimented using two part resin in this piece to represent the pond and UV resin for the fishes.



Image 12

Sustained Investigation

Height: 9.44 inches

Width: 5.9 inches

Depth: 1.77 inches

Material(s): Transparent beads to show prosperity, string, leftover red money envelopes from previous years.

Process(es): Weaving beads into a bag and folding red packets into the shape of koi fishes before attaching them

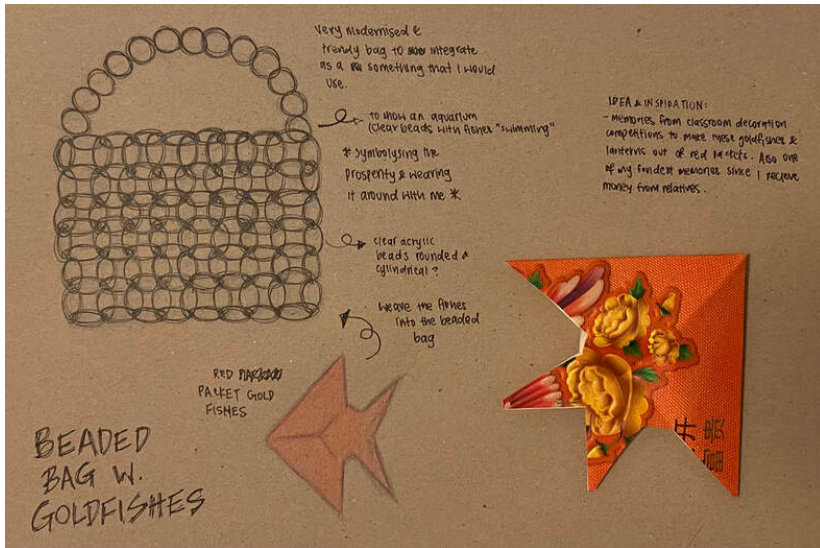


Image 13

Sustained Investigation

Height: NA

Width: NA

Depth: NA

Material(s): Beads, String, Leftover Red Packets from previous chinese new year celebrations.

Process(es): I revised this piece by trying different styles of fishes using red packets and used the koi fish.

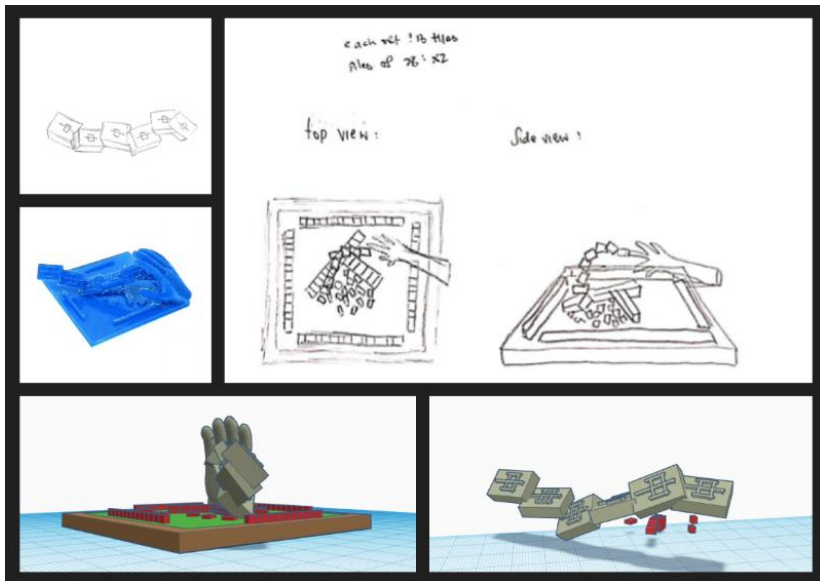


Image 14

Sustained Investigation

Height: NA

Width: NA

Depth: NA

Material(s): 3D filament, tinker cad, acrylic paint to make the mahjong sculpture.

Process(es): I experimented with this piece by using a 3D making software to design the mahjong pieces and table.



Image 15

Sustained Investigation

Height: 1.9 inches

Width: 3.54 inches

Depth: 3.54 inches

Material(s): 3D filament, tinker cad, acrylic paint to make the mahjong sculpture.

Process(es): Revision of cad model, printing it out and painting using acrylic paint to enhance tiles.

Written Evidence

Sustained Investigation

1. Identify the question(s) or inquiry that guided your sustained investigation.

2. Describe how your sustained investigation shows evidence of practice, experimentation, and revision guided by your question(s) or inquiry.

Response 1:

My inquiry revolves around the idea of how I reminisce about our past selves and always feel a sense of nostalgia in everything that we see and experience. I asked myself "How can I identify nostalgic objects that are important to me?" and "Why do I find nostalgia in objects?" The emotions that nostalgia holds is what shapes and influences our current selves. In my inquiry, I try to investigate how nostalgia plays apart in my life and to find ways to express how I can integrate such experiences into my life by preserving and expressing them through items that I used to treasure as a child.

Response 2:

Nostalgic objects resonate. By identifying my childhood like toys, memories and perspective, I can understand how my upbringing has shaped my outlook. (Image 1/2) I used a dear teddy bear, ripped its face off and replaced it with a new face of bittersweet memories. Expanding foam and acrylic explore imaginary childhood worlds (Image 3/4). Images 5/6 explore reincarnation nostalgia, circling into present self. Images 7, 12-15 explore my Chinese culture, fish symbolism, new years nostalgia associated with red packets, and revisions in images 14/15 reminisce the time spent with my Grandparents.

Work 1

Selected Works

Height: 2.7 inches

Width: 2.3 inches

Depth: 2.3 inches

Idea(s): My first pinch pot: the start of my love for clay. First thought best thought.

Material(s): Clay to make the pinch pot, a bobby pin to make the flower pattern and teal celadon glaze.

Process(es): Time, patience to create even walls, my first attempt at perfection in clay proved dedication.



View 1



View 2



View 1

Work 2

Selected Works

Height: 9.44 inches

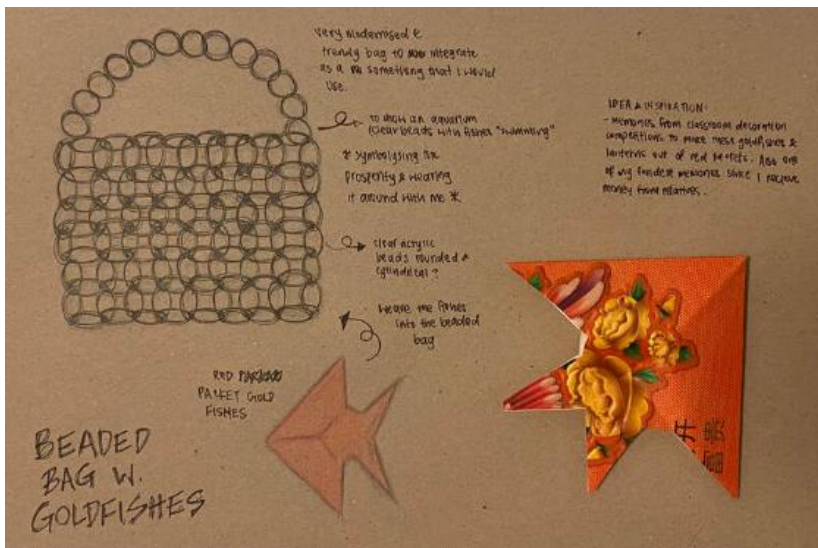
Width: 5.9 inches

Depth: 1.77 inches

Idea(s): Bring abundance and wealth around with me everywhere I go. A piece of nostalgia every step I go.

Material(s): Transparent beads to show prosperity, string, leftover red money envelopes from previous years.

Process(es): Weaving beads into a bag and folding red packets into the shape of koi fishes adding luck with me.



View 2



View 1

Work 3

Selected Works

Height: 0.51 inches

Width: 0.19 inches

Depth: 0.07 inches

Idea(s): I used Job 14:2 as a reference to form of a heart and a rose to symbolize Gods love for us for us.

Material(s): Pendant is made of gold plated brass and findings are made of gold stainless steel.

Process(es): I designed the pendant using a software and had it printed in gold plated brass though shapeways.



View 2



View 1



View 2

Work 4

Selected Works

Height: 8.26 inches

Width: 7.87 inches

Depth: 5.11 inches

Idea(s): Showing the bears expression longing of being played with after being left alone for years.

Material(s): The main components used for this piece were polymer clay, acrylic paint and UV resin as glaze.

Process(es): I took off the teddy bears face and made 2 faces showing the teddys outer and inner expression.



View 1

Work 5

Selected Works

Height: 23.2 inches

Width: 17.3 inches

Depth: 7.08 inches

Idea(s): Thinking back to dreams that I had and thinking about what I liked as a child that brought me joy.

Material(s): Expanding foam, wire, toys, old art materials, acrylic paint and beads

Process(es): Spraying foam onto cardboard and building my imaginary world by layering foam and painting it.



View 2